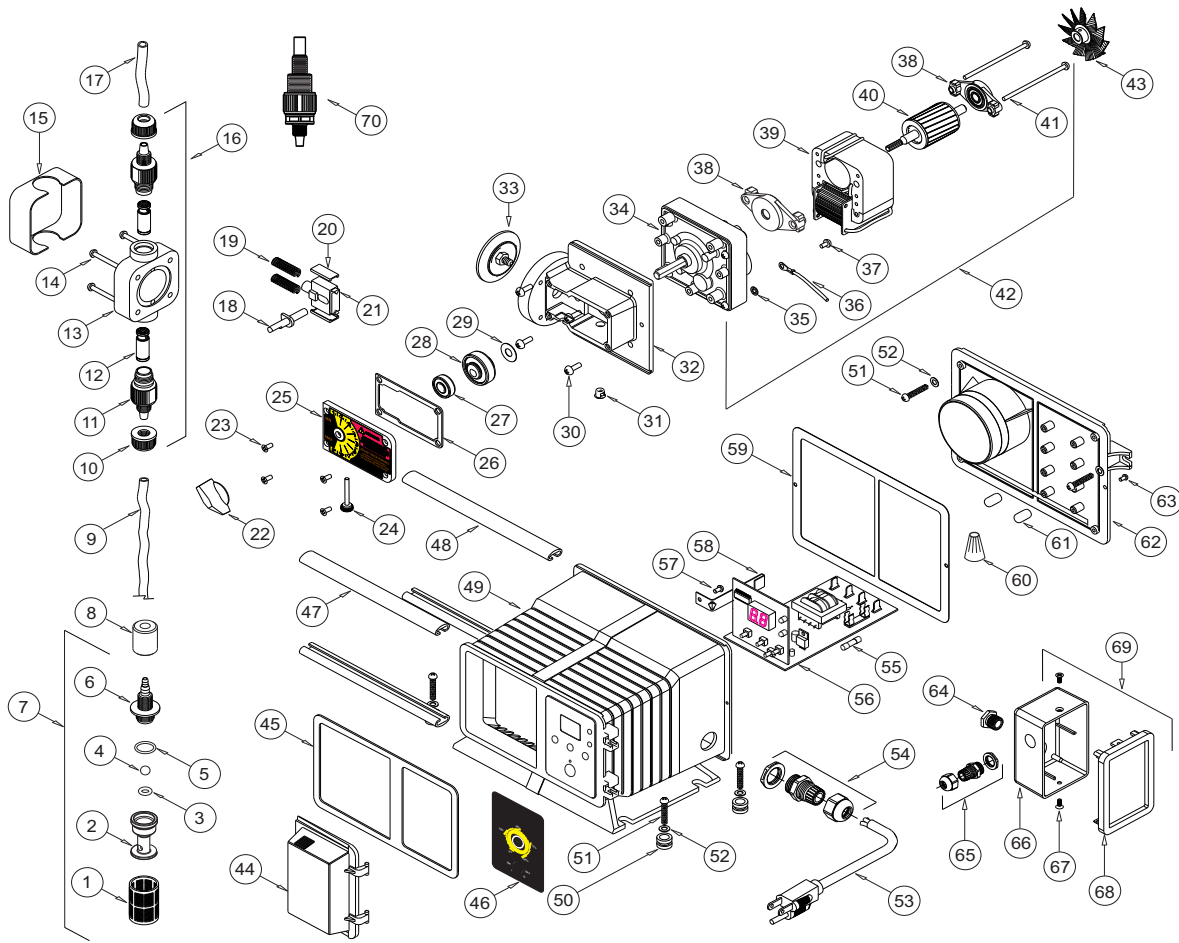


REPLACEMENT PARTS DRAWING



REPLACEMENT PARTS LIST

Item	Part No	Description	Qty	Item	Part No	Description	Qty	Item	Part No	Description	Qty
1	90002-086	Screen, FootValve, P.P.	1	32	76001-183	Motor Mount, Large Dia	1	76001-035	Enclosure, J-box model	1	
2	90002-214	Body, FootValve, PVDF	1	33	70000-683	Diaph. S/A 2.0 15N, Vit/TFE	1	90003-559	Mounting Feet, Rubber	4	
3	2-108A	O-ring Seat, FootValve, Aflas	1		70000-682	Diaph. S/A 2.0 15N, EP/TFE	1	90011-091	Screw, #10 X 1.0" Phl ST	6	
4	90003-129	O-ring Seat, FootValve, E.P.	1	34	71000-357	Gearbox, 14 RPM	1	90011-094	Washer, #10 Stainless	6	
5	90008-062	Ball, FootValve, Ceramic	1		71000-358	Gearbox, 30 RPM	1	90010-110	Power Cord, 115v60	1	
6	90003-014	O-ring, FootValve, Viton	1		71000-359	Gearbox, 45 RPM	1	90010-196	Power Cord, 220v50	1	
7	71000-324	FootValve S/A, C-340E, EP	1		71000-360	Gearbox, 60 RPM	1	90010133	Power Cord, 230V model	1	
8	90008-068	Ceramic weight, C-346	1		71000-361	Gearbox, 125 RPM	1	70000-589	Connector Liq-tite w/ nut .375	1	
9	90008-116	Tubing Suction 3/8 x 5 FT	1		71000-362	Gearbox, 250 RPM	1	A-023N-B	Timer 60 sec. Model A	1	
10	90002-077	Tube Nut, .37T, P.P.	2	35	90011-078	Washer, #8 Intrl/Star	1	A-023N-H	Timer 5 sec. Model C	1	
11	71000-204	Adapter S/A Bullet .37T Vit	2	36	90010-222	Lead Wire, ground, Green	1	C-1817N-1	Speed control 115V model F	1	
12	71000-205	Adapter S/A Bullet .37T EP	2	37	90011-024	Screw 8-32 x .25 Hex SL ST	1	C-1817N-4	Speed control 220V model F	1	
13	90002-146	P/Head Noir Molded, P.P.	1	38	70000-028	Bearing Bracket With Bearing	2	C-1817N-5	Speed control 230V model F	1	
14	90011-141	Screw 10-32 x 1.25	4	39	71000-211	Stator 115v Blue-Wh/Yell	1	90011-146	Screw, 8-32 X .25 Phil Pan F	1	
15	70004-074	Cover P/Head, HD logo	1		71000-212	Stator 220v Brwn-Wh/Yell	1	57	90006-583	Motor Retaining Clip, Ss	1
16	70001-149	Kit P/Head HDN 37T V, P-P	1		71000-213	Stator 230v Red-White/Yellow	1	58	90006-580	Gasket, Back, Neoprene	1
17	76000-374	Tubing D/Charge, 3/8 x 10 FT	1	40	70000-027	Rotor With Shaft And Spacers	1	59	90010-036	Wire Nut, Blue	2
18	90001-132	Offset Cam #1 .125"	1	41	90011-022	Screw, 8-32 X 2.5" Phl Steel	2	60	90002-192	Enclosure Back Plate, Valox	1
	90001-133	Offset Cam #2 .055"	1	42	70002-204	Gearmotor, 14 Rpm, 115v60	1	62	90011-044	Screw 6-32 x .37 Swag Form	1
	90001-134	Offset Cam #3 .187"	1		70002-205	Gearmotor, 30 Rpm, 115v60	1	63	90007-515	Bushing, J-Box Conn, Alum.	1
	90001-141	Offset Cam #4 .100"	1		70002-206	Gearmotor, 45 Rpm, 115v60	1	64	90008-199	Connector Liq-tite w/ nut .187	1
19	90006-006	Return Spring	2		70002-207	Gearmotor, 60 Rpm, 115v60	1	65	76001-168	J-Box, Ext. Input, Valox	1
20	90002-001	Slide Bearing	2		70002-208	Gearmotor, 125 Rpm, 115v60	1	66	90011-129	Screw, 6-32 X .25 Phil SS	2
21	76000-172	Stirr-up	1		70002-209	Gearmotor, 250 Rpm, 115v60	1	67	71000-133	Cover, J-Box w/Gasket, Label	1
22	90002-017	Dial Knob	1		70002-210	Gearmotor, 14 Rpm, 220v50	1	68	70000-364	J-Box Assembly, Ext. Input	1
23	90011-168	Screw #6 x .62 PH oval 'A'	4		70002-211	Gearmotor, 30 Rpm, 220v50	1	69	C-395N-6A	Inj. Valve .5-.25 MptX.37od T	1
24	90011-121	Thumb Screw 6-32 x 1.125	1		70002-212	Gearmotor, 45 Rpm, 220v50	1				
25	71000-363	Cover Cam S/A C-1100	1		70002-213	Gearmotor, 60 Rpm, 220v50	1				
26	90006-597	Gasket, Top Cover	1		70002-214	Gearmotor, 40 Rpm, 220v50	1				
27	90004-005	Bearing, Top Cover	1		70002-215	Gearmotor, 125 Rpm, 220v50	1				
28	90012-218	Label, Cam Cover	1		70002-216	Gearmotor, 250 Rpm, 220v50	1				
28	70000-131	Drive Cam S/A #1 .125"	1	43	90006-581	Fan, Motor, 2.25" Dia, Alum	1				
	70000-133	Drive Cam S/A #2 .055"	1	44	90002-191	Door, Controls Cover	1				
	70000-132	Drive Cam S/A #3 .187"	1	45	90006-579	Gasket, Front, Neoprene	1				
	70000-722	Drive Cam S/A #4 .100"	1	46	90012-224	Label percent control	1				
29	90011-014	Spacer, Rotor	1		90012-225	Label blank (model X)	1				
30	90011-122	Screw 10-32 x .50 PHL PAN	4	47	76000-999	Slide Clamp, Encl Front	2				
31	90008-138	Plug .312 Hole Black	1	48	76001-000	Slide Clamp, Encl Rear	2				
				49	90002-190	Enclosure, P/cord model	1				