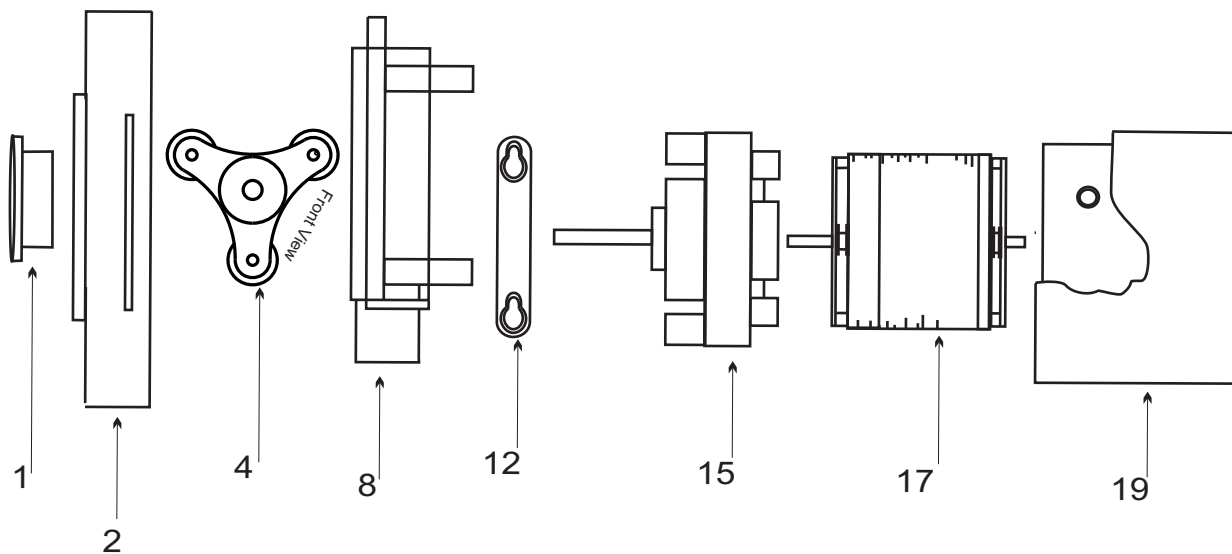


## EXPLODED VIEW



## A- 1600 PARTS LIST

1. A-011	Pumphead Cover Retaining Knob	19.C-608P	Motor Housing
2. A-001	Pumphead Cover	20.C-628	Screw 6-32x2-3/4 Phil RD
3. A-002-3N	Pump Tube Assy. 3/16" OD Norprene	24.C-308J	Junction box assembly
A-002-4	Pump Tube Assy. 1/4" OD Tygon	25.C-330-4	Tube Nut 1/4" OD Tubing
A-002-4n	Pump Tube Assy. 1/4" OD Norprene	C-330-6	Tube Nut 3/8" OD Tubing
A-002-6	Pump Tube Assy. 3/8" OD Tygon	26.C-334-4-10	Tubing 1/4" OD x 10'
A-002-6n	Pump Tube Assy. 3/8" OD Norprene	C-334-6-10	Tubing 3/8" OD x 10'
A-002-7	Pump Tube Assy. 7/16" OD Tygon	27.T140-4V	T.I. Fitting 1/4" OD Tube Viton W/ Clamp
A-002-7N	Pump Tube Assy. 7/16" OD Norprene	T140-6V	T.I. Fitting 3/8" OD Tube Viton W/ Clamp
4. A-003	Roller Assy. 3 Lobe	28.CF-3040	Clamp Fits 1" Thru 2-1/2" Pipe
A-003-1	Roller Assy. 2 Lube	29.C-346	Ceramic Foot Valve Weight
5. A-004	Pumphead Mounting screw 10-32 x 3/4"	30.C-340-4V	Foot Valve/Strainer 1/4" OD Viton
6. A-031	Pumphead Spacer	C-340-6V	Foot valve/Strainer 3/8" OD Viton
7. 2-010E	Motor Shaft Seal	31.A-023-B	Electronic Timer Assy. 1 Min. 115v
8. A-005	Pumphead	A-023-C	Electronic Timer Assy. 1 Min. 230v
9. A-006	Motor Mount Screw 10-32 x 1/2	A-023-D	Electronic Timer Assy. 1 Min. 24v
12. C-302	Motor Mount	A-023-E	Electronic Timer Assy. 2 Min. 220v
14. C-649	Bushing .50-20x.31Alum. Hex	A-023F	Electronic Timer Assy. 6 Sec. 115v
15. A-008-1	Gear Box Assembly 14 RPM	A-023-G	Electronic Timer Assy. 6 Sec. 230v
A-008-2	Gear Box Assembly 30 RPM		
A-008-3	Gear Box Assembly 45 RPM		
17. A-149-1	Motor Assy. 24v/60HZ For 14 RPM		
A-309-1	Motor Assy. 24v/60HZ For 30 & 45 RPM		
A-149-2	Motor Assy. 115v/60HZ for 14 RPM		
A-309-2	Motor Assy. 115v/60HZ for 30 & 45 RPM		
A-149-4	Motor Assy. 220v/50HZ for 14 RPM		
A-309-4	Motor Assy. 220v/50HZ for 30 & 45 RPM		
A-149-3	Motor Assy. 230v/60HZ for 14 RPM		
A-309-3	Motor Assy. 230v/60HZ for 30 & 45 RPM		