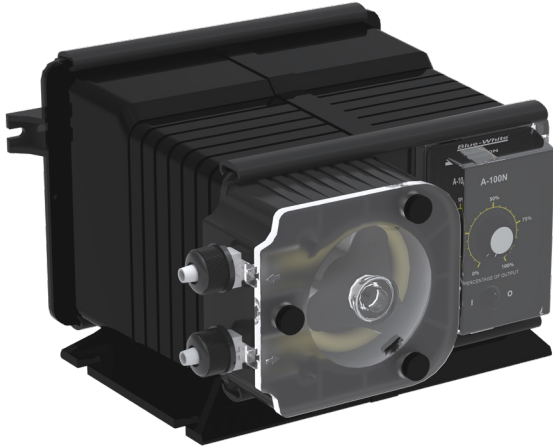


A-100NA

FLEXFLO® Peristaltic Metering Pump



Features

- Smooth and accurate peristaltic feed of chlorine and acid.
- Self-priming - even against maximum line pressure. By-pass valves are not required. Cannot vapor lock or lose prime.
- Peristaltic pump design does not have valves that can clog requiring maintenance.
- Output volume is not effected by changes in back pressure.
- Adjustable 60 second repeating interval timer. 3-60 second adjustable on time per 60 second cycle. Simple dial knob control.
- Patented Tube Failure Detection (TFD) system senses tube failure

Video link: 



Highlights

Flow range

.35 - 95.1 GPD
.9 - 250 mL/min

Pressures

up to 100 PSI
(6.9 bar)

Turndown ratio

20 : 1

Max. suction lift

30 ft. Water 0 psig

Motor

Fixed Speed AC

Warranty

1 Year

Control Methods

| Control Methods | Manual Flow Control | FVS Input ¹ | TFD Alarm Output ² | FVS Alarm Output ² | Motor Active Output ² |
|-----------------|---------------------------------|------------------------|-------------------------------|-------------------------------|----------------------------------|
| A-100NA | Adjustable 60 second cycle time | • | • | • | • |

1. Requires flow sensor - sold separately
2. Open-collector output



| | |
|---------------------------------------|---|
| Max. Working Pressure | 6T Tube = 100 psig (6.9 bar)*, 7T Tube = 50 psig (3.4 bar) |
| Max. Fluid Temperature | 130° F (54° C) |
| Max. Ambient Temperature | 14 to 110° F/ -10 to 43° C |
| Max. Viscosity | 5,000 Centipoise |
| Max. Suction Lift | 30 ft. Water at sea level (14.7 atm psi) |
| Operating Voltage | 115VAC/60Hz, 1ph (14 & 30 RPM = 1.37 Amp Max.) (45 & 60 RPM = 1.87 Amp Max.) 220VAC/50Hz, 1ph (14 & 30 RPM = 0.68 Amp Max.) (45 & 60 RPM = 1.14 Amp Max.) |
| Power Cord Options | 115V 50/60Hz = NEMA 5/15 (USA) 220V 50/60Hz = NEMA 6/15 (EU) |
| Motor | AC - Fixed speed |
| Duty Cycle | Continuous |
| Flow Adjustment Range | 0.35 - 95.1 GPD (0.9 - 250 mL/min) |
| Output Adjustment Range | 5% – 100% motor speed |
| Solids | 50% by volume |
| TFD (Tube Failure Detection) | Patented sensor. Will stop pump and activate open collector output. 6-30vdc collector voltage. 50mA max sinking current. |
| FVS (Flow Verification System) | Compatible with optional pulse flow sensor. Will stop pump and activate open collector output. 6-30vdc collector voltage. 50mA max sinking current. Contact factory for sensor options. |
| Motor Active | Motor active - open collector output. 6-30vdc collector voltage. 50mA max sinking current. |
| Enclosure | NEMA 3R, IP23, Valox PBT |
| Product Weight | 8 lb. (3.63 Kg) |
| Approximate shipping wt | 10 lb. (4.5 Kg) |
| RoHS Compliant | Yes |
| Standards | NSF/ANSI 50, CE, cETLus |

* -6T Tube max pressure for 60 rpm model is 75 psi

Output Specifications

Maximum Flow Rate (Pump output range, 5% - 100%)

| Tube | 14 RPM MODELS | | | | | 30 RPM MODELS | | | | | 45 RPM MODELS | | | | | 60 RPM MODELS | | | | |
|------|---------------|-----|--------|--------|-----|---------------|------|--------|--------|-----|---------------|------|--------|--------|------|---------------|------|--------|--------|------|
| | GPD | GPH | OZ/MIN | ML/MIN | LPH | GPD | GPH | OZ/MIN | ML/MIN | LPH | GPD | GPH | OZ/MIN | ML/MIN | LPH | GPD | GPH | OZ/MIN | ML/MIN | LPH |
| 6 | 6.9 | 0.3 | 0.6 | 18.4 | 1.1 | 16.0 | 0.67 | 1.42 | 42.1 | 2.5 | 24.0 | 1.0 | 2.13 | 63.1 | 3.8 | 30.1 | 1.25 | 2.67 | 79.2 | 4.7 |
| 7 | 21.7 | 0.9 | 1.92 | 57.0 | 3.4 | 52.5 | 2.19 | 4.66 | 138 | 8.3 | 76.1 | 3.17 | 6.76 | 200 | 12.0 | 95.1 | 3.96 | 8.45 | 250 | 15.0 |

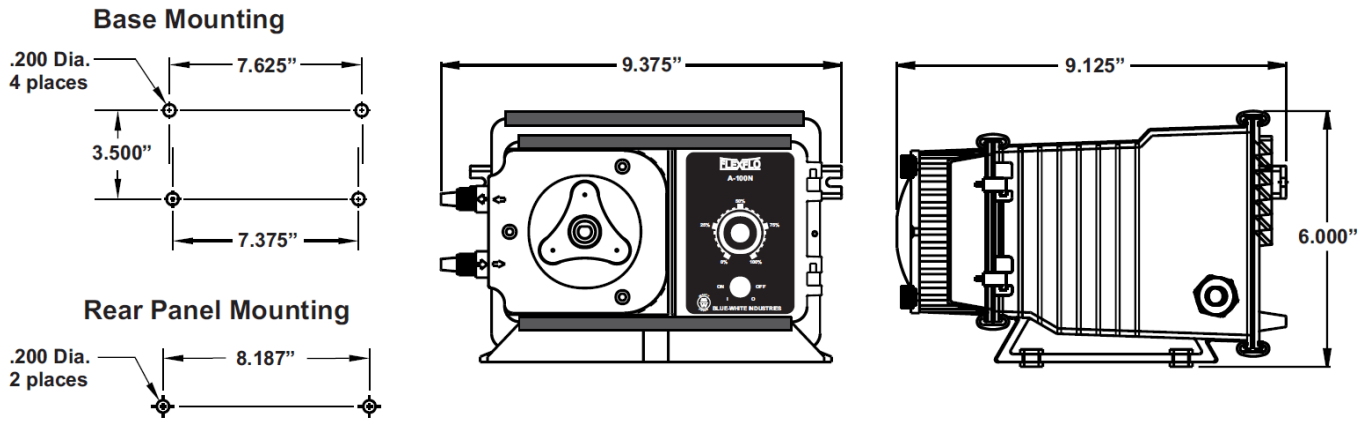
NOTE: For optimum tube life, specify the pump to operate at the lowest possible RPM and pressure.

Materials of Construction

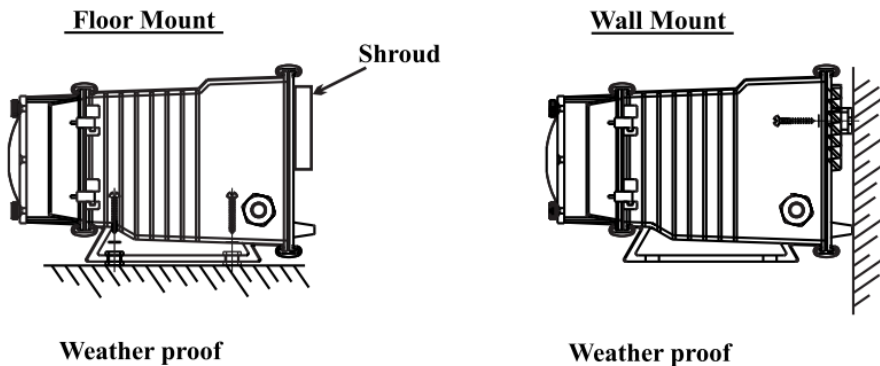
| | | | |
|-------------------------------|---|---|---|
| Non-wetted Components: | | Wetted Components: | |
| Enclosure: | Valox® (PBT) thermoplastic | Pump Tube Assembly*: | Tubing: Flex-A-Prene® Adapter Fittings: PVDF |
| Pump Head: | Valox® (PBT) thermoplastic | | Body & Insert: Polypropylene |
| Pump Head Cover: | Clear Acrylic Permanently lubricated sealed motor shaft support bronze sleeve bearing. | Injection / Back-Flow Check Valve: | Check Ball: Ceramic Spring: Hastelloy C-276 |
| Cover Screws: | Stainless steel, polypropylene cap | | Ball Seat O-Ring: TFE/P Static Seal O-Ring: FKM |
| Roller Assembly: | Rotor: Valox® (PBT) Rollers: Nylon Roller Bearings: Bronze | Ancillary Items Provided: | Suction Tubing: 3/8" OD x 1/4" ID x 5' Clear PVC Discharge Tubing: 3/8" OD x 1/4" ID x 5' Polyethylene (LLDPE) Suction Strainer: Polypropylene Weight: Ceramic |
| TFD System Sensor: | Hastelloy C-276 | | |
| Power Cord: | 3 Conductor, SJTW-A water-resistant | | |
| Hardware: | Stainless Steel | | |
| Shroud: | Valox® (PBT) thermoplastic | | |

* One spare tube provide with pump.

Dimensions



Shroud / Weather Proof




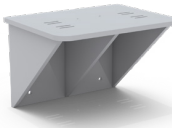




Model Number Matrix

A-100NA

FLEXFLO® Model Number

| | | | | | | | |
|--|---|----------|----------|----------|----------|----------|----------------------------|
| A1N | FLEXFLO® Peristaltic Metering Pump | | | | | | |
| Maximum Motor RPM | | | | | | | |
| 0 | 14 RPM | | | | | | |
| 1 | 30 RPM | | | | | | |
| 2 | 45 RPM | | | | | | |
| 3 | 60 RPM | | | | | | |
| Power Cord | | | | | | | |
| 0 | 115V / 60HZ, power cord NEMA 5/15 plug (US) | | | | | | |
| 1 | 220V / 50HZ, power cord CEE7/VII plug (EU) | | | | | | |
| Input/Output Control | | | | | | | |
| A | Analog Timer, 60 sec. Cycle - 100% duty | | | | | | |
| Pump Tube Material, Pump Tube Size, Flow Rate | | | | | | | |
| 6 | 3/8" OD Flex-A-Prene®, 100 PSI (14 RPM = 6.9 GPD, 30 RPM = 16.0 GPD, 45 RPM = 24.0 GPD, 60 RPM = 30.1 GPD) | | | | | | |
| 7 | 7/16" OD Flex-A-Prene®, 50 PSI (14 RPM = 21.7 GPD, 30 RPM = 52.5 GPD, 45 RPM = 76.1 GPD, 60 RPM = 95.1 GPD) | | | | | | |
| A1N | 0 | 0 | A | - | 6 | T | Sample Model Number |

Accessories

| | | |
|--|--|--|
|  <p>STAR3-7 STAR3-15 STAR3-30</p> <p>* Includes cover and foot valve</p> <p>STAR3-7 (7 Gal), STAR3-15(15 Gal), STAR3-30 (30 Gal) STAR III TANKS, PP</p> |  <p>KIT-PSM WALL MOUNT BRACKET, HDPE</p> |  <p>A1-(see spare parts page) Spare Tube Element</p> |
|  <p>TI40-6V T.I. INJECTOR, 3/8" OD</p> |  <p>C-340A FOOT VALVE</p> |  <p>A-014NK-6A PVDF INJECTOR</p> |

Visit [Accessory Pages](#) for more Options