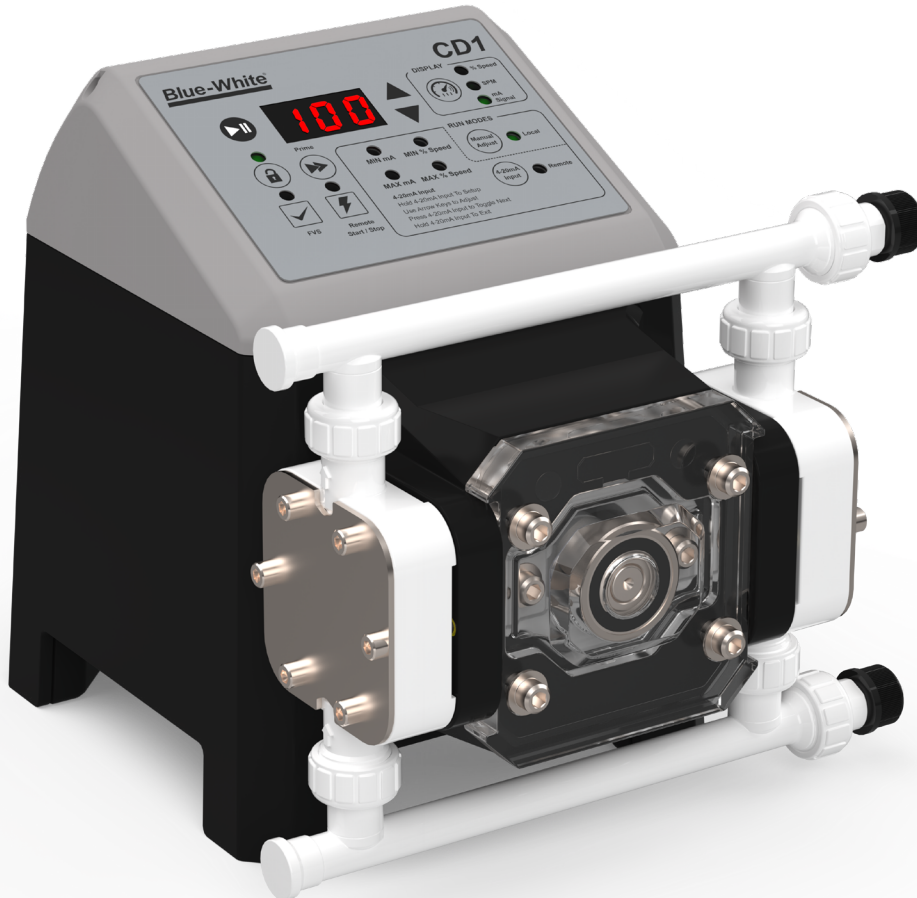


Simplified Chemical Feed

For industrial and commercial applications

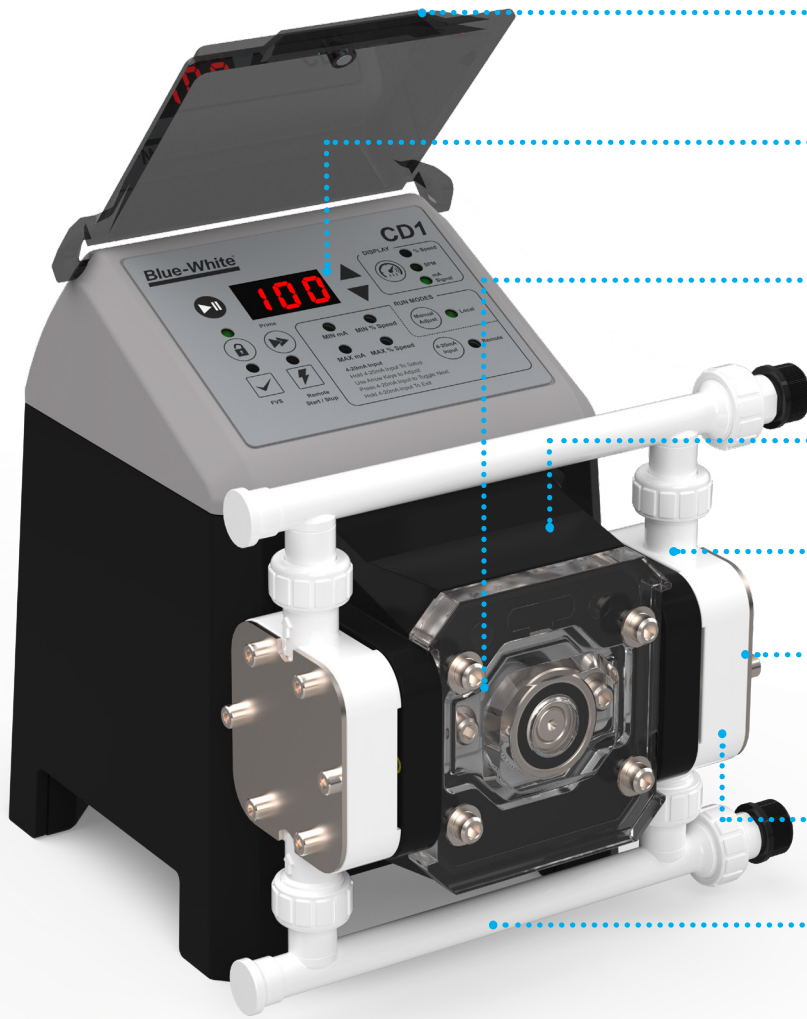


CHEM-FEED[®]

Multi-Diaphragm Metering Pumps

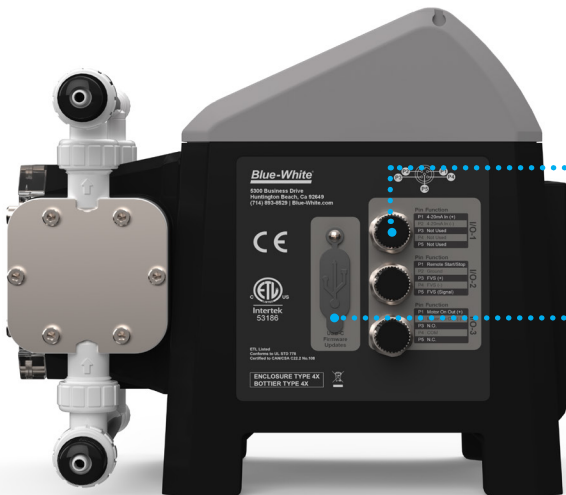
CD1

How does the CHEM-FEED® CD1 simplify chemical feed?



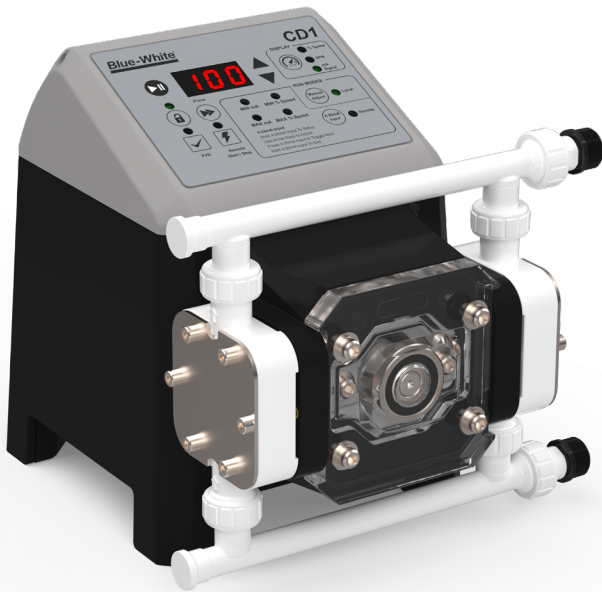
- Heavy-duty display shield**
The UV and chemical-resistant display shield protects controls from harsh environments.
- Intuitive display**
Simplified controls allow users to adjust output accurately, prime the pump, toggle control methods, and more.
- Hyperdrive technology**
Patented Hyperdrive Technology allows alternating pumping action between two diaphragms, resulting in smooth pumping action and reducing the risk of vapor lock.
- Brushless DC motor**
The BLDC motor reduces energy costs and is more durable than AC motors.
- Reliable Double Ball Check Cartridges**
Ensures proper seating of suction and discharge ball checks for reliable pumping.
- Built-in leak detection**
Patented Diaphragm Failure Detection (DFD) senses diaphragm rupture by detecting chemical in the pump head. There's no false triggering.
- Exclusive DiaFlex® Diaphragms**
The CD1's exclusive DiaFlex® Diaphragms designed to last the life of the pump.
- Innovative manifold design**
Allows for multiple configuration possibilities. Suction and discharge ports can be positioned on the left and right side of the pump.

Simplified I/O connections



- IP67 rated M12 connection ports**
Quick and reliable connection even in confined spaces. Protects against dust, moisture, and changes in temperature.
- USB-C connection port**
Download the latest firmware in the field, saving time while ensuring optimum performance.

CHEM-FEED[®] CD1



The CD1 delivers smooth, continuous chemical feed even when injecting chemicals that off-gas. Remote control signal options include Remote Start/Stop, Flow Verification, and 4-20mA. Safety features include built-in leak detection and a lockout feature that prevents tampering - patent pending.

Technical Overview

| | | | |
|-----|---------------|------------------|-----------------------|
| GPH | .0035 - 7.0 | Enclosure Rating | NEMA 4X |
| LPH | .0132 - 26.46 | Standards | cETLus, CE |
| PSI | Up to 180 | Power Supply | 100 to 240VAC-50/60Hz |
| Bar | Up to 12.4 | Warranty | 2 years |

Features

Benefits of Multi-Diaphragm Technology:

- Allows for smooth, nearly pulse-less chemical feed
- Self-priming – ideal for intermittent pumping operations
- Full stroke length clears gases from pump head
- Capable of achieving 20 feet of suction lift

Multiple Inlet and Outlet Fitting Options/Configurations:

- Straight and Elbow fittings available
- 1/2" MNPT, 1/2" Hose Barb, and 1/4"x3/8" compr. options
- Reversible inlet/outlet manifolds allow suction/discharge from right or left side
- Maximum installation flexibility

Communication & Interface:

- Remote Start/Stop: Non-powered dry contact closure
- Relay outputs include single 250V / 3A and single solid-state
- Compatible with Flow Verification Sensor (FVS) system
- Scalable 4-20 mA SCADA input
- Non-scalable 4-20 mA SCADA output



Exclusive DiaFlex[®] PVDF Diaphragms

Innovative design for a longer lasting diaphragm

Blue-White's exclusive DiaFlex[®] High-Performance Diaphragm is constructed of PVDF for exceptional chemical compatibility. DiaFlex[®] incorporates an innovative single-layer design resulting in zero breakdown or delamination, significantly reducing field maintenance and downtime.

Premium accessories to complete your system

STAR III® Chemical Tanks

STAR III® Chemical Tanks are made from natural polyethylene and UV inhibitors and will securely mount your chemical metering pump for easy access. All necessary accessories are included.

- KIT STAR-3 7 Gallon Tank
- KIT STAR-3 15 Gallon Tank
- KIT STAR-3 30 Gallon Tank



Elbow or Straight Adapter Fitting Kits

Straight adapters for horizontal connection. Elbow adapters allow for connection to vertically oriented suction and discharge tubing/piping.

- KIT-CA1TZZ Elbow Kit, 3/8" OD tubing, Aflas
- KIT-CE1TZZ Elbow Kit, 3/8" OD tubing, EP
- KIT-CA1SZZ Straight Kit, 3/8" OD tubing, Aflas
- KIT-CE1SZZ Straight Kit, 3/8" OD tubing, EP
- KIT-CA1XZZ Elbow Kit, 1/2" MNPT, Aflas
- KIT-CE1XZZ Elbow Kit, 1/2" MNPT, EP
- KIT-CA1MZZ Straight Kit, 1/2" MNPT, Aflas
- KIT-CE1MZZ Straight Kit, 1/2" MNPT, EP
- KIT-CA1CZZ Elbow Kit, 1/2" Hose Barb, Aflas
- KIT-CE1CZZ Elbow Kit, 1/2" Hose Barb, EP
- KIT-CA1BZZ Straight Kit, 1/2" Hose Barb, Aflas
- KIT-CE1BZZ Straight Kit, 1/2" Hose Barb, EP



Quick Disconnect Fittings

Safely and quickly disconnect your pump with Blue-White's Quick Disconnect Fittings. The red discharge fitting has an automatic check valve, preventing chemical backflow. The white suction fitting functions as a check valve when tubing is detached, preventing loss of prime and spills during routine maintenance.

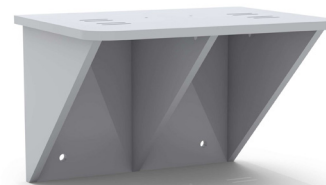
- KIT-CQA Quick Disconnect CD1 AFLAS
- KIT-CQE Quick Disconnect CD1 EP



Wall Mount Kit

Mount your pump at a convenient height to improve ergonomics. The wall mount kit comes with a tough, chemical resistant high-density polyethylene bracket and four concrete wall anchors.

- KIT-PSM / KIT-PSS (small)



M12 Connection Cables

Compatible with Blue-White's CHEM-FEED® CD1, our M12 connection cables offer fast and easy connections even in challenging conditions. Their IP67 rating means they're protected against dust, moisture, and changes in temperature.

- KIT-M12 M12 Cable Assembly, 10 ft, Qty 2
- KIT-M12-2-15 M12 Cable Assembly, 15 ft, Qty 2
- KIT-M12-2-30 M12 Cable Assembly, 30 ft, Qty 2
- KIT-M12-3 M12 Cable Assembly, 10 ft, Qty 3
- KIT-M12-3-15 M12 Cable Assembly, 15 ft, Qty 3
- KIT-M12-3-30 M12 Cable Assembly, 30 ft, Qty 3

