

# F-650 SERIES ARMORED GLASS TUBE FLOWMETER

**PIPE SIZE:**  
1/4"



65mm  
Adjustable



150mm  
Non-Adjustable

## F-650 SERIES FEATURES:

- Heavy duty meter body construction of #316 stainless steel.
- Meter tube of borosilicate glass.
- Polycarbonate tube shield.
- Viton® o-ring seals.
- Floats of glass, sapphire, #316 stainless steel or carboloy (float material depends on meter calibration).
- Flow adjustment valve of #316 stainless steel (optional).
- 1/4" F/NPT connections (optional 1/8" F/NPT)

## F-650 SPECIFICATIONS:

Temperature: .....250°F/121°C @ 0 pressure  
 Pressure: .....150 psig/10.3 Bar @ 70°F/21°C  
 Full scale accuracy: .....± 2% full scale  
 Flow Tube material .....Heavy wall Borosilicate Glass  
 Shield material .....Polycarbonate  
 Meter Housing material .....Stainless Steel  
 Adapters material .....Stainless Steel  
 O-rings .....Viton  
 Float material .....Dependent on flow rate  
 Max. pressure drop .....2 psi

See instruction manual at [www.blue-white.com](http://www.blue-white.com) for detailed installation and operating requirements.

## 65mm Scale ORDERING INFORMATION

### CALIBRATION

MODEL NUMBER	CALIBRATION WATER (70°F)			AIR (STP) CC/MIN	FLOAT MATERIAL	ADAPTER F/NPT	Standard	w/Adj. Valve (*)
	ML/MIN	LPH	GPH					
F-6501G-4X	0.011 to 0.065	0.0003 to 0.0037	0.0001 to 0.001	0.7 to 5.8	Glass	1/4"		
F-6501SA-4X	0.015 to 0.084	0.0007 to 0.0037	0.0002 to 0.001	0.8 to 8.3	Sapphire	1/4"		
F-6501SS-4X	0.015 to 0.283	0.0007 to 0.0151	0.0002 to 0.004	1.4 to 16.7	#316 SS	1/4"		
F-6501C-4X	0.024 to 0.615	0.001 to 0.0340	0.0004 to 0.009	3.0 to 33.0	Carboloy	1/4"		
F-6503G-4X	0.9 to 39.7	0.037 to 2.384	0.01 to 0.63	52 to 2040	Glass	1/4"		
F-6503SA-4X	0.6 to 61.0	0.034 to 3.671	0.009 to 0.97	56 to 2704	Sapphire	1/4"		
F-6503SS-4X	1.0 to 108.3	0.059 to 6.472	0.0158 to 1.71	115 to 3990	#316 SS	1/4"		
F-6503C-4X	2.0 to 169.8	0.117 to 10.18	0.031 to 2.69	182 to 5739	Carboloy	1/4"		
F-6502G-4X	36 to 522	2.119 to 31.30	0.56 to 8.27	1852 to 23169	Glass	1/4"		
F-6502SA-4X	58 to 798	3.444 to 47.88	0.91 to 12.65	2650 to 29218	Sapphire	1/4"		
F-6502SS-4X	106 to 1261	6.320 to 75.58	1.67 to 19.97	3785 to 42094	#316 SS	1/4"		
F-6502C-4X	176 to 1866	10.522 to 111.9	2.78 to 29.58	6082 to 58500	Carboloy	1/4"		

(\*) For Flow Adjustment Valve replace "X" for an "A" in the model number

## 150mm Scale ORDERING INFORMATION

### CALIBRATION

MODEL NUMBER	CALIBRATION WATER (70°F)			AIR (STP) CC/MIN	FLOAT MATERIAL	ADAPTER F/NPT	Standard	Adj. Valve(*)
	ML/MIN	LPH	GPH					
F-6551G-4X	0.100 to 0.850	0.0059 to 0.049	0.00158 to 0.013	11.5 to 92.0	Glass	1/4"		
F-6551SA-4X	0.21 to 1.92	0.012 to 0.130	.0033 to 0.030	17 to 140	Sapphire	1/4"		
F-6551SS-4X	0.28 to 4.74	0.0151 to 0.263	0.004 to 0.075	33 to 264	#316 SS	1/4"		
F-6551C-4X	1.10 to 8.50	0.064 to 0.510	0.017 to 0.135	58 to 454	Carboloy	1/4"		
F-6552G-4X	15 to 541	0.8971 to 32.3535	0.2370 to 8.5476	962 to 22536	Glass	1/4"		
F-6552SA-4X	30 to 806	1.7941 to 48.2013	0.4740 to 12.7348	1389 to 29560	Sapphire	1/4"		
F-6552SS-4X	57 to 1288	3.4088 to 77.0263	0.9006 to 20.3504	2397 to 41512	#316 SS	1/4"		
F-6552C-4X	103 to 1881	6.1597 to 112.4895	1.6274 to 29.7188	3542 to 59494	Carboloy	1/4"		

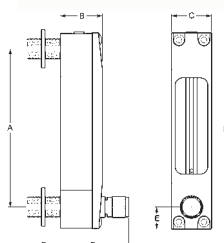
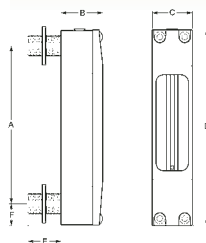
(\*) For Flow Adjustment Valve replace "X" for an "A" in the model number

**Note:** Consult the Factory for other available ranges.

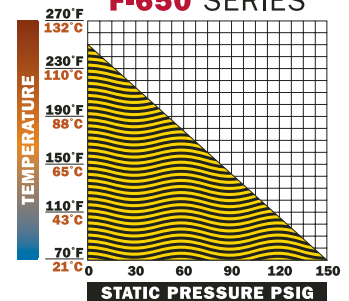
## Dimensions

Non Adjustable		
Letter	65mm	150mm
A	5 1/4"	9 1/2"
B	1 3/8"	1 3/8"
C	1 1/4"	1 1/4"
D	6 1/2"	10 7/8"
E	1"	1"
F	3/4"	3/4"

Adjustable		
Letter	65mm	150mm
A	5 1/4"	9 1/2"
B	1 3/8"	1 3/8"
C	1 1/4"	1 1/4"
D	6 1/2"	10 7/8"
E	3/4"	3/4"
F	2 5/16"	2 5/16"
G	1"	1"



## F-650 SERIES



APPROXIMATE SHIPPING WEIGHT  
2 lbs. \ .907 kg.