

Blue-White[®] ***Industries, Ltd.***

CHEM-FEED INJECTOR OPERATING MANUAL

5300 Business Drive
Huntington Beach, CA 92649
USA

Phone: 714-893-8529 **FAX:** 714-894-9492

E-mails: sales@blue-white.com or techsupport@blue-white.com
www.blue-white.com

Installation and Operating Instructions:

The Chem-Feed package includes:

- One injector unit
- 5 feet of clear PVC
- Suction tubing
- 5 feet of polyethylene discharge tubing
- A foot strainer
- Injection/anti-siphon valve

How to install pump:

Location

1. It is very important to choose a well ventilated area.
2. Allow adequate room for the supply tank and pump observation.
3. Your location should have ready access to the power supply.
4. Choose an appropriate shelf or wall protected from the weather to mount the injector.

Mounting

1. Make certain the unit has sufficient support and is secure.
2. Always protect the unit from corrosive fumes that will shorten service life.

Power Source

1. Be certain you connect the unit to the proper power supply. Using the incorrect voltage will cause severe damage to the motor. (The unit's voltage requirement is printed on the serial label.)

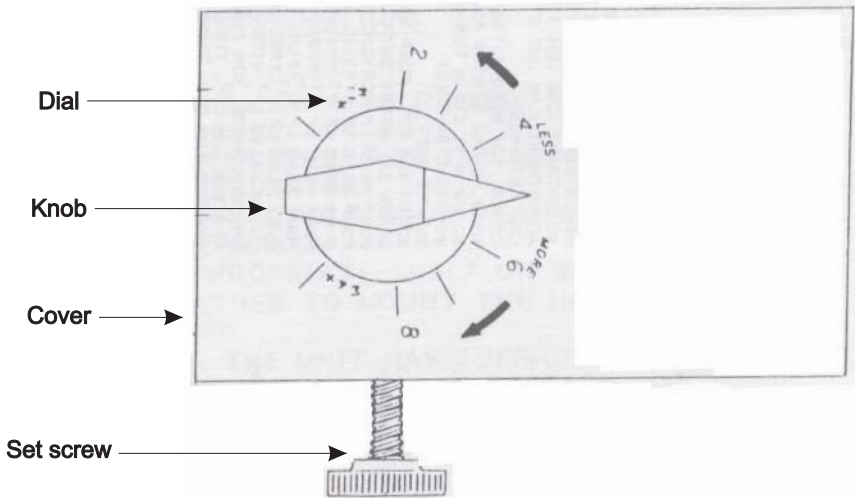
Warning - Risk of Electrical Shock

115V model pumps are supplied with a grounding conductor and grounding-type attachment plug. To reduce the risk of electrical shock, be certain that it is connected only to a properly grounded, grounding- type receptacle.

24V model pumps are supplied with a grounding conductor. To reduce the risk of electrical shock, be certain that it is connected only to a properly grounded terminal box.

Supply Tank

1. Your supply tank should be sturdy and resistant to the chemicals you will be using.
2. Be certain your tank has a tight-fitting cover. (This is especially important when pumping toxic or corrosive material).A variety of tanks are available from the factory.



Adjusting The Injector's Output

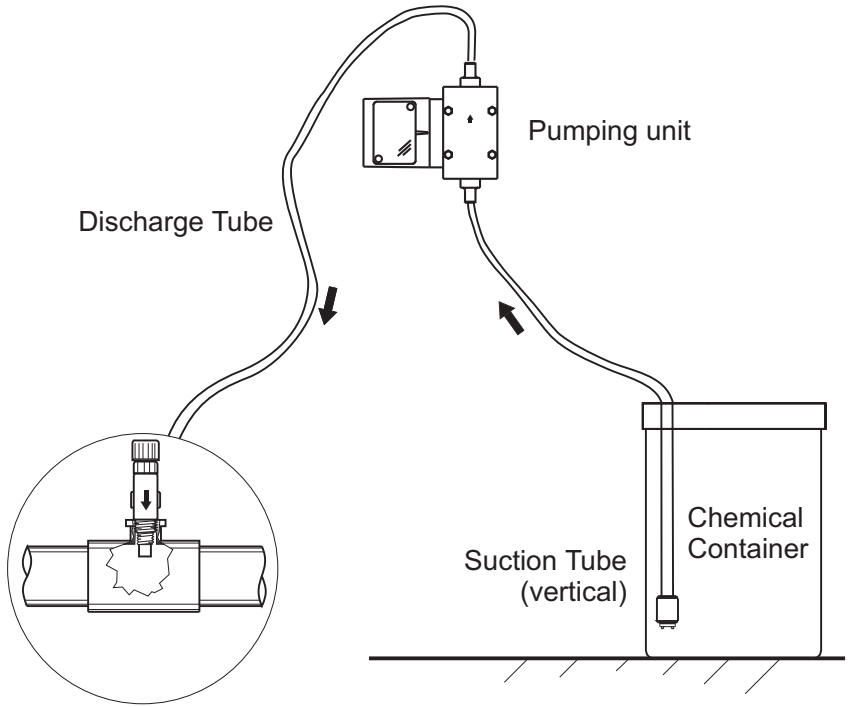
1. With the injector running, loosen set screw (4).
2. Turn the adjustment knob (2) to the desired setting. Turning clockwise delivers more output.
3. While holding knob (2) tighten set screw (4).

Measuring injector output

This volumetric test will take into account installation factors such as line pressure, fluid viscosity, etc. This type of test is considered the most accurate for measuring a puoutput in an individual installation.

1. With the injector installed under normal operating conditions, place the foot valve in a graduated container.
2. Fill the container with the same chemical normally injected, and run the pump until all air is removed from the suction line.
3. Refill the container if necessary with the foot valve in the solution.
4. Run the pump and after a measured amount of time, note the amount of chemical pumped during that time. Tip: Longer the test time , the more accurate the measurement.

TYPICAL INSTALLATION



115V Wiring color code
Green.....ground
Black or yellow.....hot
Blue.....common

230V Wiring color code
Green.....ground
Black or yellow.....hot
Red.....hot

24V Wiring color code
Green.....ground
White.....hot
Blue.....common

Pump Operation

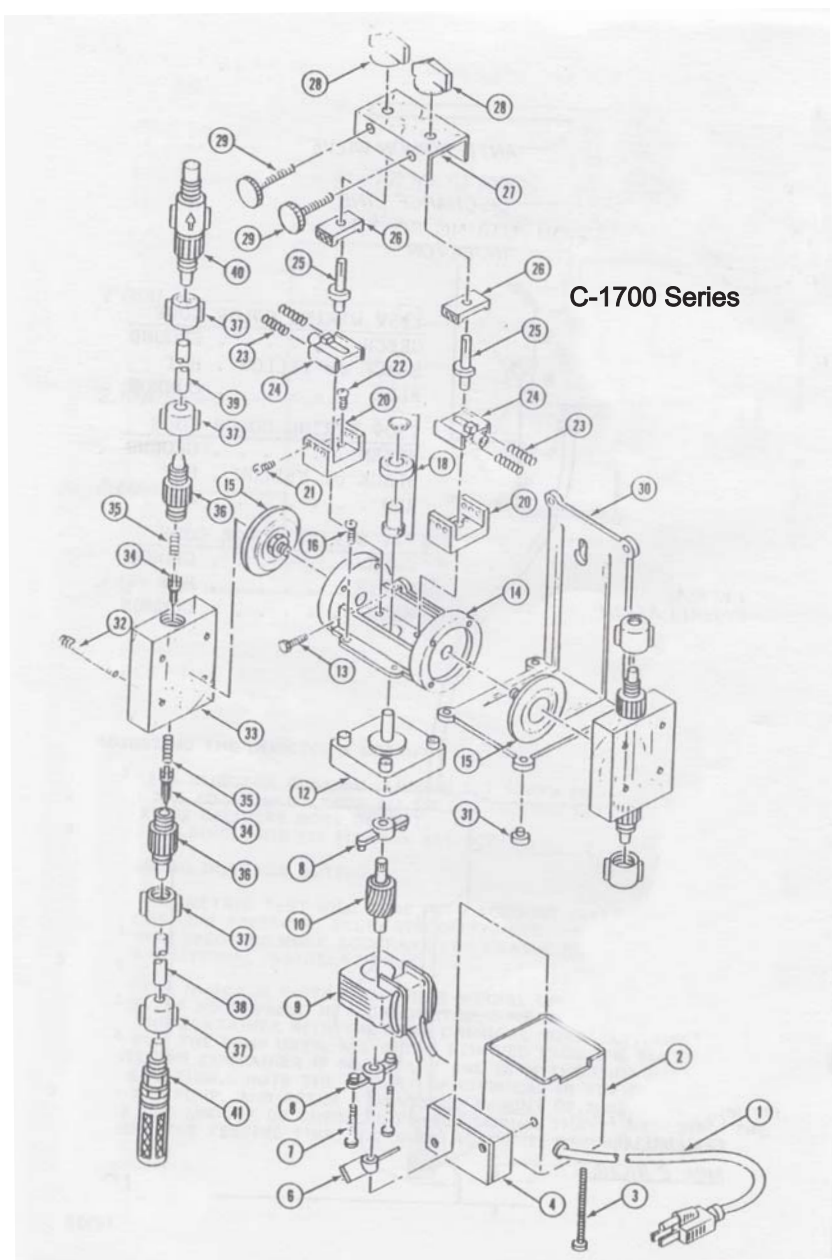
Making Connections

1. Install the foot valve/strainer to the clear PVC suction tubing.
 2. Position your chemical supply tank and insert the foot valve/strainer.
 3. Trim the suction tubing so that when it is connected to the injector, the foot valve is resting approximately 2" from the bottom of the tank.
 4. Connect the suction tubing to the suction side (bottom) of the pump head. Do not over tighten fittings.
 5. Install the injection fittings. 1/4" MPT injection fitting is supplied or use the optional T.I. (threadless injector fitting).
 6. Connect the discharge tubing to the discharge side (top) of the pump head. Do not over tighten the fittings.
 7. Trim and connect the other end of the discharge tubing to the injector fitting. install in a continuous upslope and avoid loops or conditions causing air pockets.
- Tip: To aid in priming, allow pump to prime before attaching tubing to the injector fitting.

Maintenance Procedures

1. When injecting sodium or calcium hypochlorites, the unit must be flushed two or three times per month. The injection fitting must be checked every two or three weeks. (Solids usually build up at this point) When solids block the flow, the unit's gears and motor can become damaged due to excessive back pressure.
2. To flush solids, run a weak solution of mur acid through the pump. Always flush with clean water immediately before and after you acid wash.
3. If the injector is badly blocked, it may be necessary to disassemble the pump with the acid solution. Be certain to reassemble the parts correctly.

Exploded View:



Parts List:

1.	C-1523JUL	POWER CORD 115V	22.	C-1526	C-1504N	SCREW 8-323 X .375 PHIL
2.	C-1508P	COVER MOTOR C-1700 115V	23.	C-1514N	C-1703N	SPRING RETURN STIRRUP
3.	C-608P	COVER MOTOR C-1700 230V	24.	C-1513N	C-1502	STIRRUP W/NYLON SLIDE BEARINGS
4.	C-628	SCREW 6-32 X 2.75 PHIL	25.	C-1505N	C-1505N-3	ADJUSTMENT CAM, 125 STROKE
5.	C-308J	JUNCTION BOX S/A 230V		R-1505N	CAM	ADJUSTMENT CAM, 0.65 STROKE
6.	C-612F	FAN			CAM	ADJUSTMENT CAM, 1.87 STROKE
7.	C-625	SCREW 8-32 X 2.50 PHIL	26.	C-1504N	CAM	RETAINER
8.	C-612PB	BEARING BRACKET W/BEARING	27.	C-1703N	COVER, TOP W/ADJUSTMENT DIAL	
9.	C-615P-1	STATOR S/A 115V/60HZ BLUE-BLACK LEADS	28.	C-1502	KNOB, C-1700 STROKE ADJUSTMENT	
	70000-603	STATOR S/A 115V/60HZ BLUE-YELLOW LEADS	29.	C-1519	SCREW 10-24 X 1.00 SUR-LOC	
	C-615P-2	STATOR S/A 230V/60HZ RED-BLACK LEADS	30.	C-1521	MOUNTING BRACKETS	
	70000-604	STATOR S/A 230V/60HZ RED-YELLOW LEADS	31.	C-1517	BUMPER FEET	
	C-615P-4	STATOR S/A 24V/60HZ BLUE-WHITE LEADS	32.	70000-433	SCREW S/A STD PUMP HEAD	
10.	C-616PN	ROTOR S/A W/SHAFT AND SPACERS		70000-434	SCREW S/A HEAVY DUTY PUMP HEAD	
12.	C-618P-14	GEARBOX S/A 14 RPM		C-603-1	PUMP HEAD LP ACRYLIC STD.	
	C-618P-30	GEARBOX S/A 30 RPM		S-503-1	PUMP HEAD SP ACRYLIC STD.	
	C-618P-45	GEARBOX S/A 45 RPM		C-503-6	PUMP HEAD LP POLYPROPYLENE STD.	
	C-618P-60	GEARBOX S/A 60 RPM		S-503-6	PUMP HEAD SP POLYPROPYLENE STD.	
	C-618P-125	GEARBOX S/A 125 RPM		C-513-1	PUMP HEAD LP ACRYLIC HEAVY-DUTY	
	C-618P-250	GEARBOX S/A 250 RPM		C-513-6	PUMP HEAD LP POLYPROPYLENE	
13.	C-1525	SCREW 1/4-20 X .625 SLOT	34.	C-326V-PP	CHECK VALVE S/A VITON GF/POLY	
14.	C-1701	MOTOR MOUNT C-1700LP	35.	C-354	SPRING COMPRESSION HASTELLOY	
	S-1701	MOTOR MOUNT C-1700SP	36.	C-427-6	ADAPTER 3/8" O.D. TUBE PP	
	C-4061	DIAPHRAGM S/A EP/TEFLON FACE		C-427-4	ADAPTER 1/4" O.D. TUBE PP	
15.	C-406VT	DIAPHRAGM S/A VITON/TEFLON FACE	37.	C-330-6	TUBE NUT 3/8" O.D. TUBE PP	
	C-406E	DIAPHRAGM S/A EP		C-330-4	TUBE NUT 1/4" O.D. TUBE PP	
	C-406V	DIAPHRAGM S/A VITON	38.	C-334-6	TUBING SUCTION 3/8" O.D. X 5FT PVC	
16.	C-624	SCREW 10-32 X .50 PHIL W/PATCH		C-334-4	TUBING SUCTION 1/8" O.D. X 5FT PVC	
18.	R-1507A	CAM S/A .125 STROKE	39.	C-335-6	TUBING DISCHARGE 3/8" O.D. X 5FT PE	
	R-1507A	CAM S/A .055 STROKE		C-335-4	TUBING DISCHARGE 1/4" O.D. X 5FT PE	
20.	C-1507-3A	CAM S/A .187 STROKE	40.	C-395-6V	INJECTION/ANTISIPHON VALVE 3/8" O.D.	
	C-1512N	GUIDE C-1700		C-395-6V	INJECTION/ANTISIPHON VALVE 1/4" O.D.	
21.	C-1524	SCREW 6-32 X .375 PHIL	41.	C-345-6V	FOOT VALVE/STRAINER 3/8" O.D.	
					FOOT VALVE/STRAINER 3/8" O.D.	

LIMITED WARRANTY

Your new pump is a quality product and is warranted to be free of defects as set down in this policy. All parts, including rubberized goods, and labor are covered under warranty for 90 days from the date of purchase. Used peristaltic pump tube assemblies are not warranted. Parts, excluding rubberized goods, are covered under warranty for 12 months from the date of purchase.

Warranty coverage does not include damage to the pump that results from misuse, carelessness, abuse or alteration. Only the repair or the replacement of the pump is covered. Blue-White Industries does not assume responsibility for any other loss or damage.

Warranty status is determined by the pump's serial label and the sales invoice or receipt. The serial label must be on the pump and the pump must be accompanied by the sales invoice or receipt to obtain warranty coverage. The warranty status of the pump will be verified by Blue-White or a factory authorized service center.

Please be advised; injection and metering devices are not intended as a means of treating water to render it suitable for human consumption. When used as hypochlorinators, they are meant to destroy bacteria and algae contamination, before it's removal by filtration. Acid and soda injectors are used for PH control (balance). Blue-White injectors are factory tested with water only for pressure and performance. **Installers and operators of these devices must be well informed and aware of the precautions to be taken when injecting various chemicals -especially those considered hazardous or dangerous.**

Should it become necessary to return an injector for repair or service, you must attach information regarding the chemical used as some residue may be present within the unit which could be a hazard to service personnel.

Blue-White Industries will not be liable for any damage that may result by the use of chemicals with their injectors and it's components. Thank you.

PROCEDURE FOR IN WARRANTY REPAIR

Carefully pack the pump to be repaired, include the foot strainer and injection/check valve fitting. Enclose a brief description of the problem as well as the original invoice or sales receipt showing the date of purchase. The receipt will be returned with the unit. Prepay all shipping costs. COD shipments will not be accepted. Warranty service must be performed by the factory or an authorized service center. Damage caused by improper packaging is the responsibility of the sender.

AUTHORIZED SERVICE CENTERS

ARKANSAS

BT Environmental, Inc
Bill Thomason
225 Castleberry Street
Hot Springs, AR 71901
501-624-3837

CALIFORNIA (NORTHERN)
Howard E. Hutching company
(Repair Center)
7190 Penryn Plaza
Penryn, CA 95663
800-568-3958

Swimco Electric Co.
753 Camden Avenue
Campbell, CA 95008
408-378-2607

CALIFORNIA (SOUTHERN)
Blue-White Industries
(Repair Center)
5300 Business Drive
Huntington Bch. CA 92649
714-893-8529

COLORADO
Denver Winpump
5754 Lamer ave
Arvada, CO 80002
303-424-3551

CONNECTICUT
Cronin-Cook & Associates
24 West Road
Vernon, CT 06029
860-875-0544

Rice Pump & Motor Repair
5740 Powerline Road
Ft. Lauderdale FL 33309
954-776-6049

American Pump
7580-A W. Tennessee St.
Tallahassee, FL 32304
850-575-9618

Jerry Lee Chemical Co.
3407 W. Old Fairfield Drive
Pensacola, FL 32505
904-432-9929

Picard Chemical

1670 S. Congress Avenue
W. Palm Beach, FL 33406
561-965-3434

ILLINOIS
Mullarkey Associates
(Repair Center)
12346 S. Keeler Ave.
Alsip, IL 60658
708-597-5558

MARYLAND
Century Pool Service, Inc
5020 Nicholson Court, #201
Kensington, MD 20895
301-231-8999

NEW YORK
Sherwood Specialties, Inc.
875 Atlantic Ave. 'B'
Rochester, NY 14609
585-546-1211

NORTH CAROLINA
Southern Industrial Sales
1903 Herring Avenue
Wilson, NC 27893
800-872-7665

SOUTH DAKOTA
Son-Aqua Distributing
Jim Robinson
2447 W. Main Street
Rapid City, SD 57702
605-343-7716

TENNESSEE
Rock City Machine
307 3rd Avenue South
Nashville, TN 37201
615-244-1371

TEXAS
Alamo Water Refiners
13700 Hwy. 90 West
San Antonio, TX 78245
210-677-8400

Shelter's Water Refining
Robert Shelton
2708 E. Randol Mill Rd.
Arlington, TX 76011
817-640-6188

NOTES:



Users of electrical and electronic equipment (EEE) with the WEEE marking per Annex IV of the WEEE Directive must not dispose of end of life EEE as unsorted municipal waste, but use the collection framework available to them for the return, recycle, recovery of WEEE and minimize any potential effects of EEE on the environment and human health due to the presence of hazardous substances. The WEEE marking applies only to countries within the European Union (EU) and Norway. Appliances are labeled in accordance with European Directive 2002/96/EC.

Contact your local waste recovery agency for a *Designated Collection Facility* in your area.

80000-044

Rev.12/01/2009